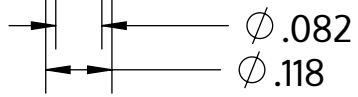


Metric size	M3 x 1.12 mm
US size (converted)	#4-22
	Tolerances [inch]
Length	+/- 0.031
Head diameter	+0 / -0.011
Head height	+/- 0.005
Thread diameter	+0.003 / -0



Description	STP43 3.0x35.0 - TT10
Matière	Acier,trempé et revenu
Surface	zinguée 5-7 µm,recuit, bleue / passivée avec transparence
Poids	1.389 kg / 1000 Unité



**STP430300350S**

_Zoll Zeichnung Größe A	Redimensionner None:1	2024-04
-------------------------	-----------------------	---------