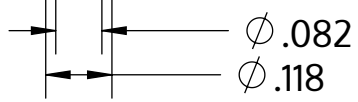


Metric size	M3 x 1.12 mm
US size (converted)	#4-22
	Tolerances [inch]
Length	+/- 0.031
Head diameter	+0 / -0.011
Head height	+/- 0.005
Thread diameter	+0.003 / -0



Description	STP43 3.0x35.0 - TT10
Material	steel, hardened
Surface	zinc-plated 5-7 μm, baked, blue / transparent passivated
Weight	1.389 kg / 1000 pieces



STP430300350S

Inch Drawing Size A	Scale None:1	2024-04
---------------------	--------------	---------