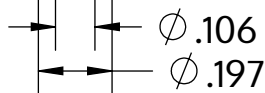


Metric size	M5 x 2.24 mm
US size (converted)	#11-11
	Tolerances [inch]
Length	+/- 0.031
Head diameter	+0 / -0.014
Head height	+/- 0.004
Thread diameter	+0.007 / -0



Opis	STP41A 5.0x50.0 - T20
Materiał	Stal szlachetna A2
Powierzchnia	Prosta, bejcowana i pasywowana
Waga	4.159 kg / 1000 sztuk



SCREWERK

STP41A0500500E

_Zoll Zeichnung Größe A

Skala None:1

2024-04