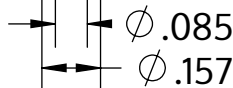


Metric size	M4 x 1.79 mm
US size (converted)	#8-14
	Tolerances [inch]
Length	+/- 0.031
Head diameter	+0 / -0.014
Head height	+/- 0.004
Thread diameter	+0.007 / -0



Description	STP41A 4.0x50.0 - T20
Material	steel, hardened
Surface	zinc-plated 5-7 μ m, baked, blue / transparent passivated
Weight	2.863 kg / 1000 pieces



SCREWWERK

STP41A0400500S

Inch Drawing Size A

Scale None:1

2024-04