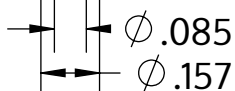


Metric size	M4 x 1.79 mm
US size (converted)	#8-14
	Tolerances [inch]
Length	+/- 0.031
Head diameter	+0 / -0.014
Head height	+/- 0.004
Thread diameter	+0.007 / -0



Opis	STP41A 4.0x50.0 - T20
Materiał	Stal szlachetna A2
Powierzchnia	Prosta, bejcowana i pasywowana
Waga	2.863 kg / 1000 sztuk



**SCREWERK**

**STP41A0400500E**

\_Zoll Zeichnung Größe A

Skala None:1

2024-04