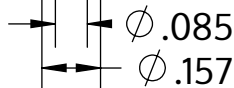


| | |
|---------------------|-------------------|
| Metric size | M4 x 1.79 mm |
| US size (converted) | #8-14 |
| | Tolerances [inch] |
| Length | +/- 0.031 |
| Head diameter | +0 / -0.014 |
| Head height | +/- 0.004 |
| Thread diameter | +0.007 / -0 |



| | |
|-------------|-----------------------------|
| Descrizione | STP41A 4.0x50.0 - T20 |
| Materiale | acciaio inossidabile A2 |
| Superficie | bianco-decapato e passivato |
| Peso | 2.863 kg / 1000 pezzi |



SCREWERK

STP41A0400500E

_Zoll Zeichnung Größe A

Scala None:1

2024-04