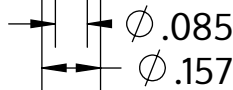


Metric size	M4 x 1.79 mm
US size (converted)	#8-14
	Tolerances [inch]
Length	+/- 0.031
Head diameter	+0 / -0.014
Head height	+/- 0.004
Thread diameter	+0.007 / -0



Beskrivelse	STP41A 4.0x50.0 - T20
Materiale	Ædelstål A2
Overflade	blank, bejdset og passiveret
Vægt	2.863 kg / 1000 stykke



**SCREWERK**

**STP41A0400500E**

\_Zoll Zeichnung Größe A

Skalering None:1

2024-04