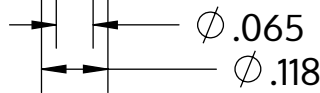


|                     |                   |
|---------------------|-------------------|
| Metric size         | M3 x 1.34 mm      |
| US size (converted) | #4-19             |
|                     | Tolerances [inch] |
| Length              | +/- 0.031         |
| Head diameter       | +0 / -0.011       |
| Head height         | +/- 0.004         |
| Thread diameter     | +0.005 / -0       |



|              |                               |
|--------------|-------------------------------|
| Beschreibung | STP41A 3.0x40.0 - T8          |
| Werkstoff    | Edelstahl A2                  |
| Oberfläche   | blank, gebeizt und passiviert |
| Gewicht      | 1.240 kg / 1000 Stück         |



**SCREWWERK**

**STP41A0300400E**

Zoll Zeichnung Größe A

Skalierung None:1

2024-04