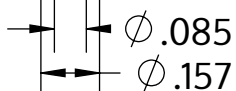


Metric size	M4 x 1.79 mm
US size (converted)	#8-14
	Tolerances [inch]
Length	+/- 0.031
Head diameter	+0 / -0.014
Head height	+/- 0.004
Thread diameter	+0.007 / -0



Descrizione	STP39A 4.0x50.0 - T20
Materiale	acciaio, temprato
Superficie	zincato 5-7 micron, ricotto, blu / trasparente passivato
Peso	3.036 kg / 1000 pezzi



SCREWERK

STP39A0400500S

_Zoll Zeichnung Größe A

Scala None:1

2024-04