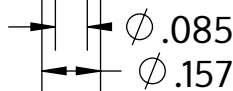


Metric size	M4 x 1.79 mm
US size (converted)	#8-14
	Tolerances [inch]
Length	+/- 0.031
Head diameter	+0 / -0.022
Head height	+/- 0.004
Thread diameter	+0.007 / -0



Descriere	STP38A 4.0x50.0 - T20
Material	oțel, călit
Exterior	zincat 5-7 $\mu$ m, recopt, pasivat transparent/albastru
Greutate	2.921 kg / 1000 unități



**SCREWWERK**

**STP38A0400500S**

\_Zoll Zeichnung Größe A

Scalarea None:1

2024-04